



LET'S BUILD A BETTER FUTURE

 FRONT ENTRY DOORS / **AD** series



# Comfort is just a step away

Front entry doors, aren't they one of the most important parts of our home? They protect us from the cold, from the rain or the burglars, to mention just these examples. Doors also keeps us away from street noise. But how do you make the right choice, and buy a door that will meet our expectations and serve us for years?

An issue that requires careful consideration before the purchase is the heat transfer coefficient (U). The lower its value, the more heat will stay with us inside. Aluprof offers panelled doors with the  $U_D$  coefficient of 0.44 W/(m²K).

When choosing our door, let's not forget to check out their water resistance. It's the water resistance of the door that will keep the driving rain outside in times of strong winds and heavy rain. Water resistance of the front entry door is rated from 3A to 9A. The higher the class, the better the door protects our home. Aluprof offers panelled doors rated 7A.

Infill panels are included in door leaves based on the MB-79N, MB-86N & MB-104 Passive system, and come in a variety of colours and structures. The elements can be milled, decorated with applications or made of insulated glass. Panelled doors can be fabricated very large and high – up to 1.40 m (W) and almost 2.60 m (H). If, therefore, we dream of an impressive front entrance, this will be the perfect choice. But above all, the door should fit to the style of your home. If our interiors are the traditional ones, we should opt for a leaf with glass panels or wooden-like veneer. Lovers of modern interior can choose among RAL colours, think shade of graphite.

Let's take some time and choose a door with which we will create a beautiful entrance that will enchant our guests and will make us feel like we were in a safe haven.

## MB-104 Passive

$U_D$  from 0.44 W/m²K

Aluprof's panel door uses thermally insulated aluminium profile system – MB-104 Passive is the most technologically advanced door system offered by Aluprof. The leaf profile can be combined with special infills, aligned with the surface of the frame. The system is dedicated to passive and energy-efficient buildings

**Technical details:**

Frame depth	95 mm
Leaf depth	95 mm
Infill panel thickness	44-95 mm
Maximum dimensions of the leaf	L up to 1400 mm, H up to 2600 mm

**Technical parameters:**

Air permeability	Class 3, EN 12207
Water tightness	Class E1200 (1200 Pa), EN 12208
Wind load resistance	Class C4/B4, EN 12210
Thermal insulation	$U_D$ from 0.44 W/m²K
Burglary-resistance	RC2

MB-86N

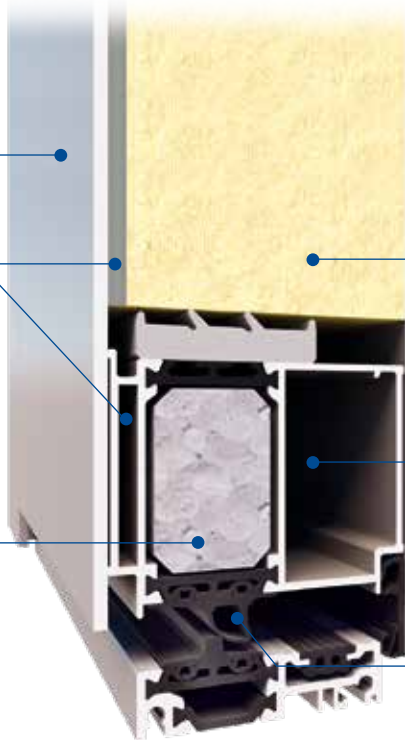
U<sub>D</sub> from 0.64 W/m²K

Aluprof's panel doors use thermally insulated aluminium profile system – MB-86N – which, just like the MB-104 Passive system, is dedicated to energy-efficient and passive building. The leaf profile can be combined with special infills, aligned with the surface of the frame.

Aesthetically pleasing, decorative panels are available in various designs and RAL colours

Expansion profiles and door leaf panels

They come in four versions: ST, SI, SI+ and AERO for a very good thermal performance



Excellent thermal insulation thanks to the polyurethane foam (PUR)

Rigid and durable aluminium profiles permit the fabrication of large-sized doors

Specially designed weather strips provide high water tightness and low air permeability, bringing both a comfort and a potential for cost savings

Technical details:	
Frame depth	77 mm
Leaf depth	77 mm
Infill panel thickness	44-77 mm
Maximum dimensions of the leaf	L up to 1400 mm, H up to 2600 mm

Technical parameters:	
Air permeability	Class 3, EN 12207
Water tightness	Class E900 (900 Pa), EN 12208
Wind load resistance	Class C5/B5, EN 12210
Thermal insulation	U <sub>D</sub> from 0,64 W/m²K
Burglary-resistance	RC2

MB-79N


U<sub>D</sub> from 0,7 W/m²K

Aluprof's panel door uses popular, thermally insulated aluminium profile system – MB-79N ST, MB-79N SI and MB-79N SI+. The leaf profile can be combined with special infills, aligned with the surface of the frame.

Elegant decorative panels, available in may different patterns and RAL colours and wood effect finishes

Expansion profiles

They come in three versions: MB-79N ST, MB-79N SI and MB-79N SI+, for a very good thermal performance



XPS polyurethane foam ensures an excellent thermal insulation

Specially designed weather strips provide high water tightness and low air permeability, bringing both a comfort and a potential for cost savings

Technical details:	
Frame depth	70 mm
Leaf depth	70 mm
Infill panel thickness	44-70 mm
Maximum dimensions of the leaf	L up to 1400 mm, H up to 2600 mm

Technical parameters:	
Air permeability	Class 3, EN 12207
Water tightness	Class E900 (900 Pa), EN 12208
Wind load resistance	Class C5/B5, EN 12210
Thermal insulation	U <sub>D</sub> ab 0,7 W/m²K
Burglary-resistance	RC2



MB-86N PIVOT DOOR – Front entry door with an off-centre rotation axis

U<sub>D</sub> from 0,75 W/m²K

Apart from the basic single-swing version, the front entry door can also be made with an off-centre rotation axis using the MB-86N PIVOT DOOR system.



Technical details:	
Frame depth	77 mm
Leaf depth	77 mm
Infill panel thickness	77 mm
Maximum dimensions of the leaf	L up to 1950 mm, H up to 3400 mm
Maximum leaf weight	500 kg

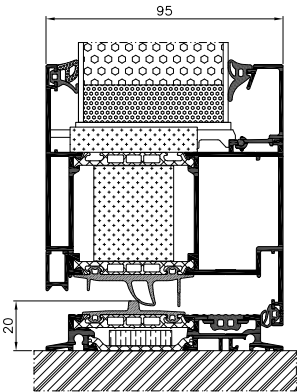
Technical parameters:	
Air permeability	Class 4, EN 12207
Water tightness	Class 4A (150 Pa), EN 12208
Wind load resistance	Class C3 (1200 Pa), EN 12210
Operating forces	Class 1, EN 12217
Resistance to torsion	Class 4, EN 1192
Racking	Class 4, EN 1192
Thermal insulation	U <sub>D</sub> from 0,75 W/m²K

BASIC



Insert panels

- Double glazing units, U<sub>g</sub> coefficient of U<sub>g</sub> 0.5 W/m²K or of 0.7 W/m²K
- 44 to 72 mm thick panel
- Thermal transmittance for MB-79N doors U<sub>D</sub> from 1.0 W/m²K, for MB-86N doors U<sub>D</sub> from 0.8 W/m²K and for MB-104 doors U<sub>D</sub> from 0.63 W/m²K
- Four versions: ST, HI, SI, SI+ and Aero

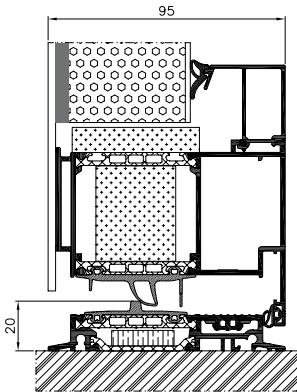


CLASSIC



Aligned on one side

- Triple glazing units, U<sub>g</sub> coefficient of U<sub>g</sub> 0.5 W/m²K or of 0.7 W/m²K
- 44 to 85 mm thick panel
- Thermal transmittance for MB-79N doors U<sub>D</sub> from 0.9 W/m²K, for MB-86N doors U<sub>D</sub> from 0.67 W/m²K and for MB-104 doors U<sub>D</sub> from 0.48 W/m²K
- Four versions: ST, HI, SI, SI+ and Aero

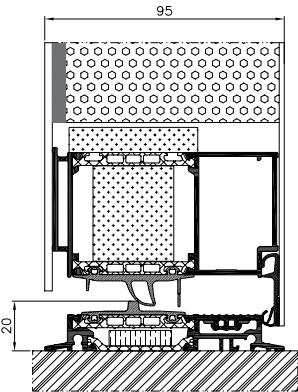


EXCLUSIVE



Aligned on both sides

- Triple glazing units, U<sub>g</sub> coefficient of U<sub>g</sub> 0.5 W/m²K or of 0.7 W/m²K
- 70 mm thick panel (MB-79N), 77 mm (MB-86N) and 95 mm (MB-104 Passive)
- Thermal transmittance for MB-79N doors U<sub>D</sub> from 0.7 W/m²K, for MB-86N doors U<sub>D</sub> from 0.64 W/m²K and for MB-104 doors U<sub>D</sub> from 0.44 W/m²K
- Four versions: ST, HI, SI, SI+ and Aero



All available models can be inserted into the profiles or glued on one or both sides.



AD01

- Pull AS 10 1600
- Glazing (front): VSG 33.1 thermofloat
- Glazing (center): Satinovo
- Glazing (backside) thermofloat with warm edge spacer
- Colour: RAL 7016



AD02

- Pull AS 10 1600
- Glazing (front): VSG 33.1 thermofloat
- Glazing (center): Satinovo
- Glazing (backside) thermofloat with warm edge spacer
- Inox steel placed outside, aligned
- Colour: RAL 7016



AD03

- Pull AS 10 1600
- Glazing (front): VSG 33.1 thermofloat
- Glazing (center): Satinovo
- Glazing (backside) thermofloat with warm edge spacer
- Inox steel placed outside, aligned
- Colour: RAL 7016



AD04

- Pull AS 10 800
- Glazing (front): VSG 33.1 thermofloat
- Glazing (center): Satinovo
- Glazing (backside) thermofloat with warm edge spacer
- Inox steel placed outside, stuck
- Colour: RAL 7016



AD05

- Pull AS 20 800
- Glazing (front): VSG 33.1 thermofloat
- Glazing (center): Satinovo
- Glazing (backside) thermofloat with warm edge spacer
- Inox steel placed outside, stuck
- Colour: RAL 7016



AD06

- Pull AS 10 1400
- Glazing (front): VSG 33.1 thermofloat
- Glazing (center): Satinovo
- Glazing (backside) thermofloat with warm edge spacer
- Inox steel placed outside, aligned
- Colour: RAL 7016



AD07

- Pull AS 10 1600
- External millings
- Colour: RAL 7016



AD08

- Pull AD 134 1200
- Glazing (front): VSG 33.1 thermofloat
- Glazing (center): sandblasted glass with transparent strips
- Glazing (backside) thermofloat with warm edge spacer
- Inox steel placed outside, aligned
- Colour: RAL 7016



#### AD09

- Pull AS 10 800
- Glazing (front): VSG 33.1 thermofloat
- Glazing (center): Satinovo
- Glazing (backside) thermofloat with warm edge spacer
- External millings
- Colour: RAL 7016



#### AD10

- Pull AS 10 1200
- External millings plus inox steel placed outside
- Colour: RAL 7016



#### AD11

- Pull AS 20 1200
- Glazing (front): VSG 33.1 thermofloat
- Glazing (center): Satinovo
- Glazing (backside) thermofloat with warm edge spacer
- External millings
- Colour: RAL 7016



#### AD12

- Pull AS 10 1400
- Glazing (front): VSG 33.1 thermofloat
- Glazing (center): Satinovo
- Glazing (backside) thermofloat with warm edge spacer
- External millings
- Colour: RAL 7016



#### AD13

- Pull AS 10 1200
- Glazing (front): VSG 33.1 thermofloat
- Glazing (center): Satinovo
- Glazing (backside) thermofloat with warm edge spacer
- Wood-like or inox steel placed outside, aligned
- Colour: RAL 9007



#### AD14

- Pull AS 10 1200
- Inox steel placed outside, aligned
- Colour: RAL 7016



#### AD15

- Pull AZ76
- Glazing (front): VSG 33.1 thermofloat
- Glazing (center): Satinovo
- Glazing (backside) thermofloat with warm edge spacer
- Inox steel placed outside, aligned
- Colour: RAL 7016/RAL 3004



#### AD16

- Pull AW72
- External millings
- Colour: RAL 7001



AD17

- Pull AS 10 1600
- Colour: RAL 3004



AD18

- Pull AW10
- Inox steel placed outside, aligned
- Colour: RAL 7016



AD19

- Pull AS 10 800
- Glazing (front): VSG 33.1 thermofloat
- Glazing (center): sandblasted glass with transparent strips
- Glazing (backside) thermofloat with warm edge spacer
- Colour: RAL 7001



AD20

- Pull AS 10 1400
- Glazing (front): VSG 33.1 thermofloat
- Glazing (center): Satinovo
- Glazing (backside) thermofloat with warm edge spacer
- Inox steel placed outside, aligned
- Colour: RAL 7016



AD21

- Pull AS 10 1200
- Glazing (front): VSG 33.1 thermofloat
- Glazing (center): Satinovo
- Glazing (backside) thermofloat with warm edge spacer
- Wood-like colour: ADEC M102 Ebony
- Colour: RAL 9010



AD22

- Pull AS 10 1000
- Glazing (front): VSG 33.1 thermofloat
- Glazing (center): Satinovo
- Glazing (backside) thermofloat with warm edge spacer
- Inox steel placed outside, aligned
- Colour: RAL 7016



AD23

- Pull AS 10 1200
- Glazing (front): VSG 33.1 thermofloat
- Glazing (center): Satinovo
- Glazing (backside) thermofloat with warm edge spacer
- External millings
- Colour: RAL 7016



AD24

- Pull AS 10 1400
- Inox steel placed outside, aligned
- Colour: RAL 7016/Wood-like
- Wood-like colour: ADEC O205 Walnut Vein



AD25

- Pull AS 10 1400
- Glazing (front): VSG 33.1 thermofloat
- Glazing (center): Satinovo
- Glazing (backside) thermofloat with warm edge spacer
- External millings plus stainless steel, placed outside, aligned
- Colour: RAL 9016



AD26

- Pull AS 10 1600
- Glazing (front): VSG 33.1 thermofloat
- Glazing (center): Satinovo
- Glazing (backside) thermofloat with warm edge spacer
- Inox steel placed outside, aligned
- Colour: RAL 3004



AD27

- Pull AS 10 1800
- Glazing (front): VSG 33.1 thermofloat
- Glazing (center): Satinovo
- Glazing (backside) thermofloat with warm edge spacer
- Inox steel placed outside, aligned
- Colour: RAL 7016



AD28

- Pull AS 10 1400
- Glazing (front): VSG 33.1 thermofloat
- Glazing (center): Satinovo
- Glazing (backside) thermofloat with warm edge spacer
- Inox steel placed outside, aligned
- Colour: RAL 9016



AD29

- Pull AQ10 1020 1600 mm with RAL 9005 powder coating
- External millings
- Colour: RAL 7016
- Wood-like colour: ADEC C247 Gean



AD30

- Pull AW25
- External millings
- Colour: RAL 3003



AD31

- Pull AW104
- External millings
- Colour: RAL 7001



AD32

- Flush-mounted pull AW23, L-1400 mm, inox steel
- Colour: RAL 9007





#### AD33

- Flush-mounted pull L-1000 mm integrated with the panel, with matching powder coating
- Inox steel, aligned
- Colour: RAL 9016



#### AD34

- Flush-mounted pull L-1000 mm integrated with the panel, with matching powder coating
- Wood-like paint
- Colour: RAL 9016
- Wood-like colour: ADEC D207 Winchester



#### AD35

- Flush-mounted pull L-1600 mm integrated with the panel, with matching powder coating
- Glazing (front): VSG 33.1 thermofloat
- Glazing (center): Satinovo
- Glazing (backside) thermofloat with warm edge spacer
- Colour: RAL 9016



#### AD36

- Flush-mounted pull L-1600 mm integrated with the panel, with matching powder coating
- Inox steel, aligned
- Colour: RAL 7016



#### AD37

- Flush-mounted pull L-1600 mm integrated with the panel, with matching powder coating
- External millings
- Colour: RAL 9007



#### AD38

- Flush-mounted pull L-1600 mm integrated with the panel, with matching powder coating
- Colour: RAL 9007

Models with a flush-mounted, integrated pull available for profiles from 65 to 95 mm thick.

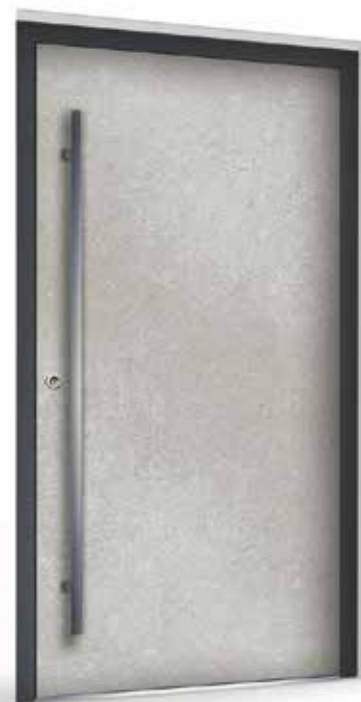
Models with a flush-mounted, integrated pull available for profiles from 65 to 95 mm thick.





#### AD39

- Flush-mounted pull L-1600 mm integrated with the panel, with RAL 9005 powder coating
- Colour: concrete effect



#### AD40

- Pull AQ 1020 1600
- Colour: concrete effect



#### AD41

- Pull AQ 1020 1600 with RAL 9005 powder coating
- Glazing (front): VSG 33.1 thermofloat
- Glazing (center): Satinovo
- Glazing (backside) thermofloat with warm edge spacer
- Colour: concrete effect



#### AD42

- Pull AQ 1020 1600
- 3D inox steel on the outside
- Colour: concrete effect



#### AD43

- Pull AQ 1020 1600 with RAL 9005 powder coating
- Makalu; natural stone
- Maximum panel dimensions: 1180×3010 mm



#### AD44

- Flush-mounted pull L-1600 mm integrated with the panel, with RAL 9005 powder coating
- Makalu; natural stone
- Maximum panel dimensions: 1180×3010 mm

Models with a flush-mounted, integrated pull available for profiles from 65 to 95 mm thick.

The images and the colour of the stone are provided as a visual reference.  
The type of stone selected, its structure and its thickness may vary slightly on account of its natural characteristics.

Models with a flush-mounted, integrated pull available for profiles from 65 to 95 mm thick.







#### AD45

- Flush-mounted pull L-1600 mm integrated with the panel, with RAL 9005 powder coating
- Everest; natural stone
- Maximum panel dimensions: 1180×3010 mm

#### AD46

- Pull AQ 1020 1600 with RAL 9005 powder coating
- 3D inox steel on the outside
- Colour: RAL 7016
- Annapurna; natural stone

The images and the colour of the stone are provided as a visual reference.  
The type of stone selected, its structure and its thickness may vary slightly on account of its natural characteristics.

Models with a flush-mounted, integrated pull available for profiles from 65 to 95 mm thick.



// Pulls\*    stainless steel    black

**AS 10**

available  
dia. 30 mm  
straight bracket

- AS 10 400
- AS 10 600
- AS 10 800
- AS 10 1000
- AS 10 1200
- AS 10 1400
- AS 10 1600
- AS 10 1800

// Pulls\*    stainless steel    black

**AQ 10**

available  
40 × 20, 40 × 40 mm

- AQ 1020 400
- AQ 1020 600
- AQ 1020 800
- AQ 1020 1000
- AQ 1020 1200
- AQ 1020 1400
- AQ 1020 1600
- AQ 1040 400
- AQ 1040 600
- AQ 1040 800
- AQ 1040 1000
- AQ 1040 1200
- AQ 1040 1400
- AQ 1040 1600

// Pulls\*    stainless steel    black

**AS 45**

available  
dia. 30 mm  
angle brace 45°

- AS 45 400
- AS 45 580
- AS 45 800
- AS 45 1000
- AS 45 1200
- AS 45 1400
- AS 45 1600
- AS 45 1800

// Pulls\*    stainless steel    black

**AQ 45RX**

available  
40 × 20, 40 × 40 mm

- AQ 4520RX 400
- AQ 4520RX 600
- AQ 4520RX 800
- AQ 4520RX 1000
- AQ 4520RX 1200
- AQ 4520RX 1400
- AQ 4520RX 1600
- AQ 4540RX 400
- AQ 4540RX 600
- AQ 4540RX 800
- AQ 4540RX 1000
- AQ 4540RX 1200
- AQ 4540RX 1400
- AQ 4540RX 1600

// Pulls\*    stainless steel

**AS 10CD**

- AS 10CD 625
- AS 10CD 825
- AS 10CD 1025
- AS 10CD 1225
- AS 10CD 1425
- AS 10CD 1625

**AD 134**

AD 134 1200

1600 mm  
1200 mm

**AS 20**

AS 20 800  
AS 20 1200

1200 mm  
800 mm

// Flush fitted pulls    stainless steel    black

**AW 10**

**AW 10**  
option for cylinder

**AW 19**

**AW 25**

**AW 23**

**AW 72**

**AW 21**

**AW 22**

**AW 104**

// Decorative pulls

**AZ 76**

**AZ 77**

**AZ 82**

**AZ 29**


**AZ 31**

\* Mounting kit included - see the price list for details.  
and large mounting kits (polyurethane adhesive, activator, primer, sponge to apply the primer + sponge sanding block) and small mounting kits (polyurethane adhesive, sponge to apply the primer + sponge sanding block).




// Lever pull

1924216X  
stainless steel,  
natural anode  
and inox, white,  
anthracite, black



1924218X  
stainless steel,  
natural anode and  
inox, white, anthracite,  
black



1924230X  
stainless steel

8001289X  
natural anode,  
RAL



1924113X  
stainless steel

1924111X  
RAL



1924113X  
stainless steel

// Rosettes



AR 61421



AR 74421



AR 78421



ARS 10



ARS 20

// Pull with electronics



Fingerprint scanner  
available with the AQ 10 and AQ 45



PWZ integrated with the panel



PWZ\* pull with backlighting

colour  
of pull:  
as per  
the RAL  
chart

// Scratch protection



KS100



KS200



KS300



KS400



KS400 BIOKEY

// Kickplates



EK100 kick plate,  
flush-mounted  
or applied with adhesive



Micro switch set into the pull\*



available  
with the  
AQ 10  
pull



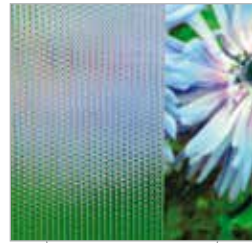
Touch sensor set into the pull\*



available  
with the  
AQ 10  
PQ 45  
AQ  
AW 10  
AW 21  
AW 22  
AW 72  
pull

\*Available backlight colours:  cool white (standard)  warm white

## // Ornaments



Master-Point



Chinchilla



Satinovo



Master-Ligne



Master-Carre

Aluprof offers a wide range of glass with motif, glass made of transparent or ornamental glass in its most popular models.

All door models come in variants with sidelight and toplight.

**Variant 1:** Sandblasted glass (motif)

**Variant 2:** Transparent glass

**Variant 3:** Ornamental glass

**Variant 4:** Safety glass

Sidelights and fixed lights include triple glazing units with warm glass spacers. Sidelights (fixed glazing) can be placed either on one or on both sides of the door assembly.

Maximum sidelight width: 1400 mm

**Extra ornaments (optional):**

“Master-Point”

“Chinchilla”

“Satinovo”

“Master-Ligne”

“Master-Carre”

“Mirrastar” (mirror effect)

“Antisol” (semi-transparent mirror effect)

## // Wood effect / Concrete effect

Beech  
ADEC B108Dark Gean  
ADEC C106Gean  
ADEC C146Gean  
ADEC C247Golden Oak  
ADEC D101Rustic Oak  
ADEC D246Golden Oak  
ADEC D349Swamp Oak  
ADEC D502Vintage Oak  
ADEC D825Concrete  
ADEC E137Fir  
ADEC J107Chestnut  
ADEC K101Ebony  
ADEC M102Mahogany  
ADEC M103Sapele Mahogany  
ADEC M204Palisander  
ADEC M332Walnut  
ADEC O102Vein Walnut  
ADEC O205Walnut  
ADEC O650Turner Oak  
ADEC T151Cherry  
ADEC W109Wenge  
ADEC W205Winchester  
ADEC W645

## // RAL &amp; structural colours\*



\* All RAL colours and structural colours as per the offer  
The colours may vary slightly from the finished product.



Scan the QR code  
and download the PDF  
onto your mobile device

# ALUPROF

ALUMINIUM SYSTEMS

**ALUPROF SA**

ul. Warszawska 153, 43-300 Bielsko-Biała, Poland  
tel. +48 33 81 95 300, fax +48 33 82 20 512  
e-mail: [aluprof@aluprof.eu](mailto:aluprof@aluprof.eu)